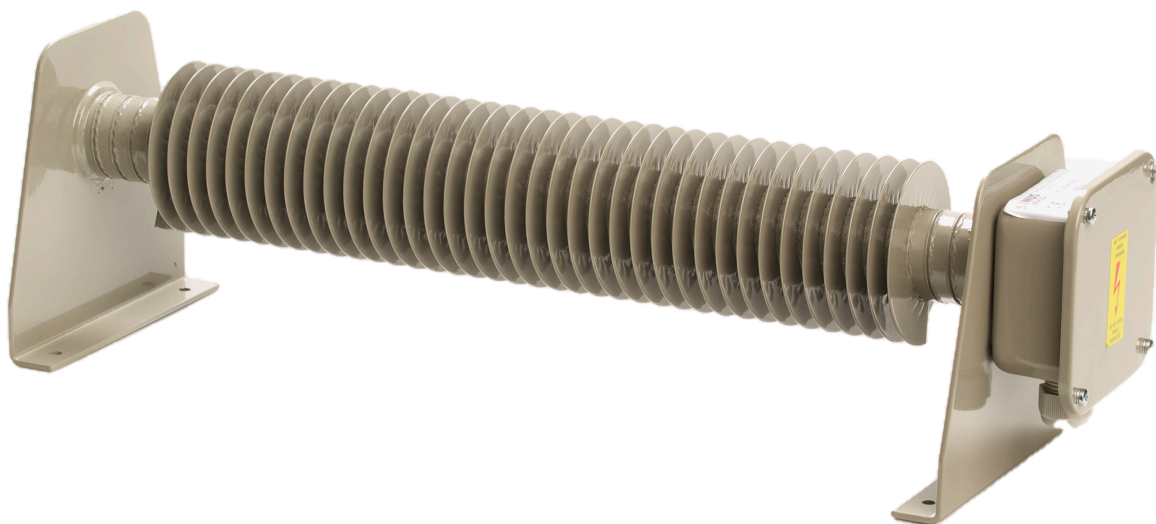


**FINNED TUBE HEATER - Type WD-L / GG-L**  
*Manual*



# FINNED TUBE HEATER - WD-L / GG-L

dust to maintain a proper heat exchange.

## Accessories

- Room thermostat for *dry* areas
- Room thermostat for *moist* areas

## GB Before you call the service department

Please check if possible:

- Power failure
- Fuse failure
- Switched off (earth leakage) circuit breaker.
- Defect in plug or cord
- If the heater has been switched off due to overheating (press the safety thermostat button). Check whether or not the heater is or has been covered and whether there is enough ventilation possible around the heater.

## Environment

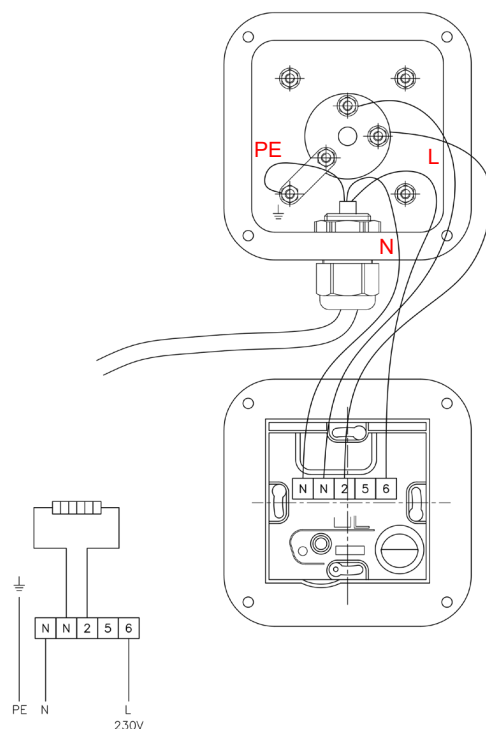
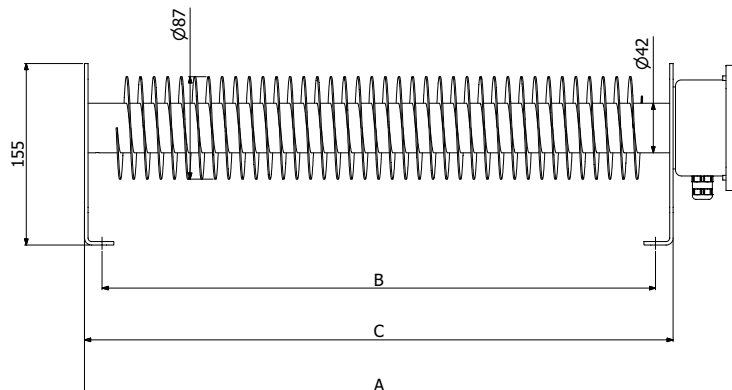


This symbol (figure 1) on the product(s) and / or accompanying documents means that used electrical and electronic equipment (WEEE) should not be mixed with general household waste. For proper treatment, recovery and recycling, please take this product(s) to designated collection points where it will be accepted free of charge. Alternatively, in some countries, you may be able to return your products to your local retailer upon purchase of an equivalent new product. Disposing of this product correctly will help save valuable resources and prevent any potential negative effects on human health and the environment, which could otherwise arise from inappropriate waste handling. Please contact your local authority for further details of your nearest designated collection point. Penalties may be applicable for incorrect disposal of this waste, in accordance with your national legislation.

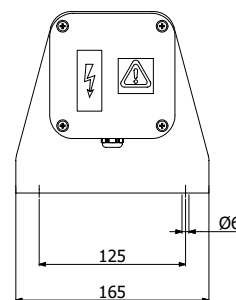
## Warranty

A 1 year warranty is provided on all functional parts.

	Length (A)	Mounting (B)	Support- support (C)
<b>WD-L / GG-L 500 (300 Watt)</b>	555 mm	473 mm	500 mm
<b>WD-L / GG-L 1000 (600 Watt)</b>	1055 mm	973 mm	1000 mm
<b>WD-L / GG-L 1500 (900 Watt)</b>	1555 mm	1473 mm	1500 mm
<b>WD-L / GG-L 2000 (1250 Watt)</b>	2055 mm	1973 mm	2000 mm



Electrical diagram incl. thermostat



# FINNED TUBE HEATER - WD-L / GG-L

## Introduction

In the interest of safe use you are obliged to read this manual carefully and comply with the safety and operating instructions.

## Safety regulations

- The installation of the finned tube heaters must be performed by an approved installer and must be in accordance with local regulations.
- Please make sure there is a free airflow across the fins.



100 mm in all directions

- In accordance with applicable standards the power rating of the heater is such that the temperature of the heater will not exceed 85°C above ambient.
- Do not cover the heater.
- Direct contact with the heating elements must always be prevented.
- The thermostat sensor must always be mounted at the top of the tube for a proper protection.
- The heater should be safeguarded in accordance with local regulations.
- Before opening the junction box, the heater must be allowed to cool down and the power switched off.

## Technical specifications

Voltage	230V -10/+5%
Frequency	50.... 60 Hz
Power rating	see type-plate
Relative humidity	20-80%
Ingress protection	IP65

(When there is a built-up thermostat mounted the protection is IP30)

This heater complies with the CE directives.

Cable connection by plastic cable gland M20.

Type WD-L is (grey) epoxy coated, GG-L is galvanized.

## Application

- Finned tube heaters are used in *normal dry* environments and in *moist* environments where “*non-flammable material*” is stored, in compliance with IEC 60364.

## Installation instructions

- Please make sure whether the local voltage is in accordance with the voltage mentioned on the type-plate of the finned tube heater.
- The safety regulations must be obeyed.
- The heater is suitable for fixed wiring as well as cord and plug.
- In case of fixed wiring we advise to mount a 2-pole switch, contact distance >3mm (disconnecting switch)
- The finned tube heater should be mounted horizontally.
- Earthing as specified in the low voltage regulations is mandatory.
- Never mount the heater directly underneath a wall socket or thermostat.

## Commissioning

- Before turning on the heater please check whether it is connected properly and there are no visible defects.

## Operation

- Through natural ventilation across the fins the finned tube heater provides heat convection and radiation and does not carry any control functions.
- If a room thermostat is mounted it should be set to the desired value.

## Maintenance

- Under normal use and conditions the heater is maintenance free. It is recommended to keep the heater free from

GB